

JONES - PARCEL "C"

0683-002

168

BEING A REPLAT OF PARCEL "C", JONES P.U.D. AS RECORDED IN PLAT BOOK 78, PAGES 71 THROUGH 78 OF THE PUBLIC RECORDS OF PALM BEACH COUNTY, FLORIDA SITUATE IN SECTIONS 33 AND 34, TOWNSHIP 45 SOUTH, RANGE 42 EAST, PALM BEACH COUNTY, FLORIDA

SHEET 4 OF 5

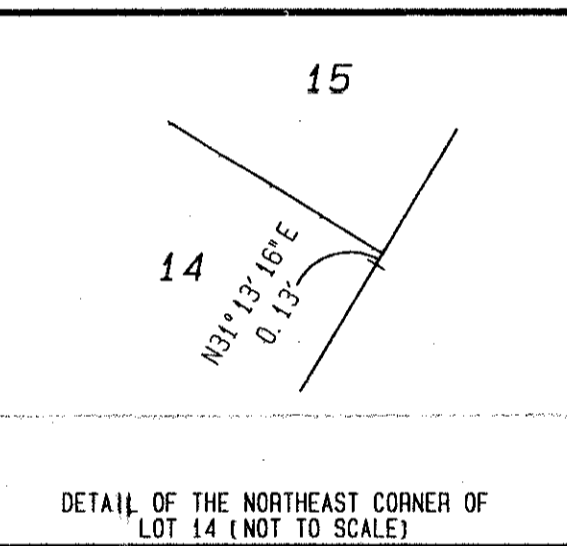
NOVEMBER 1996

STATE OF FLORIDA)
COUNTY OF PALM BEACH) SS
THIS PLAT WAS FILED FOR
RECORD AT _____ DAY OF
THIS _____ AD. 1996 AND
DULY RECORDED IN PLAT BOOK
_____ ON PAGES _____ AND

DOROTHY H. WILKEN, CLERK
CIRCUIT COURT
BY: _____ DC

LEGEND:

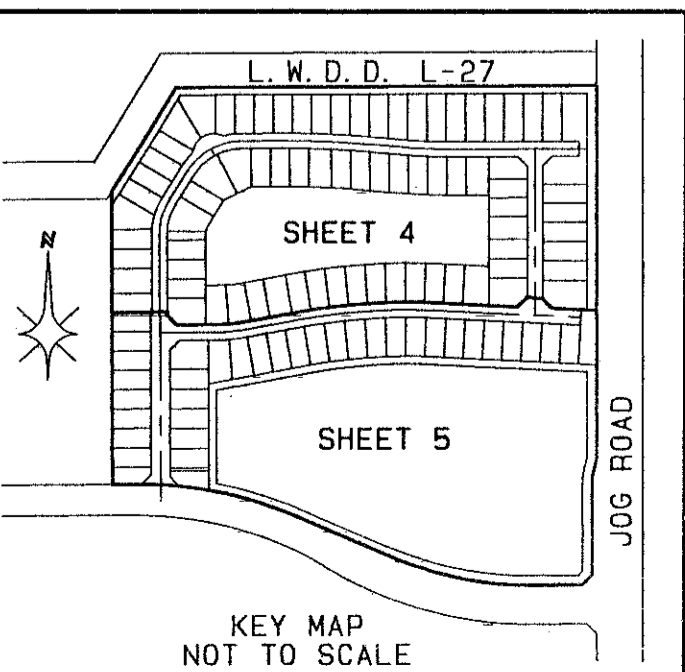
- A = CENTRAL ANGLE/DELTA
- C = CENTERLINE
- CH = CHORD
- D.B. = DEED BOOK
- D.E. = DRAINAGE EASEMENT
- F.P.C.L. = FLORIDA POWER AND LIGHT COMPANY
- L = ARC LENGTH
- L.A.E. = LIMITED ACCESS EASEMENT
- L.M.A.E. = LAKE MAINTENANCE ACCESS EASEMENT
- L.M.E. = LAKE MAINTENANCE EASEMENT
- L.M.D.D. = LAKE WORTH DRAINAGE DISTRICT
- N.R. = NON-RADIAL
- N.T.S. = NOT TO SCALE
- O.R.B. = OFFICIAL RECORDS BOOK
- P.B. = PLAT BOOK
- P.S. = PAGE
- P.O.B. = POINT OF BEGINNING
- P.O.C. = POINT OF COMMENCEMENT
- R = RADIUS (RADIUS)
- R.F. = RADIAL TO FRONT LOT LINE
- R.R. = RADIAL TO REAR LOT LINE
- R.W. = RIGHT OF WAY
- U.E. = UTILITY EASEMENT
- W.C. = WITNESS CORNER
- Z.L.L.M.E. = ZERO LOT LINE MAINTENANCE EASEMENT
- ⊙ = PERMANENT CONTROL POINT (PCM)
- PCP #4380
- = PERMANENT REFERENCE MONUMENT (PRM)
- SET PRM #4380



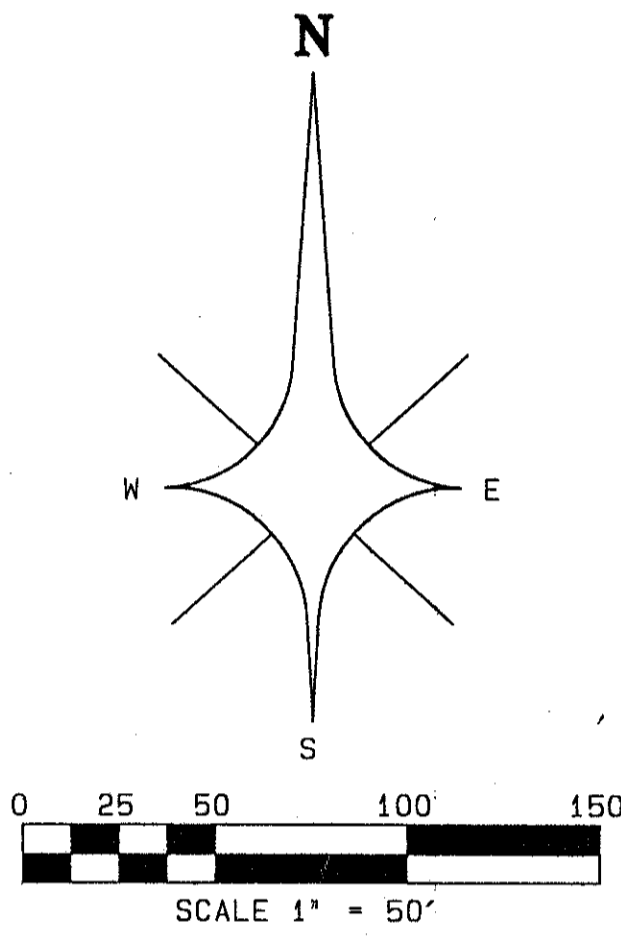
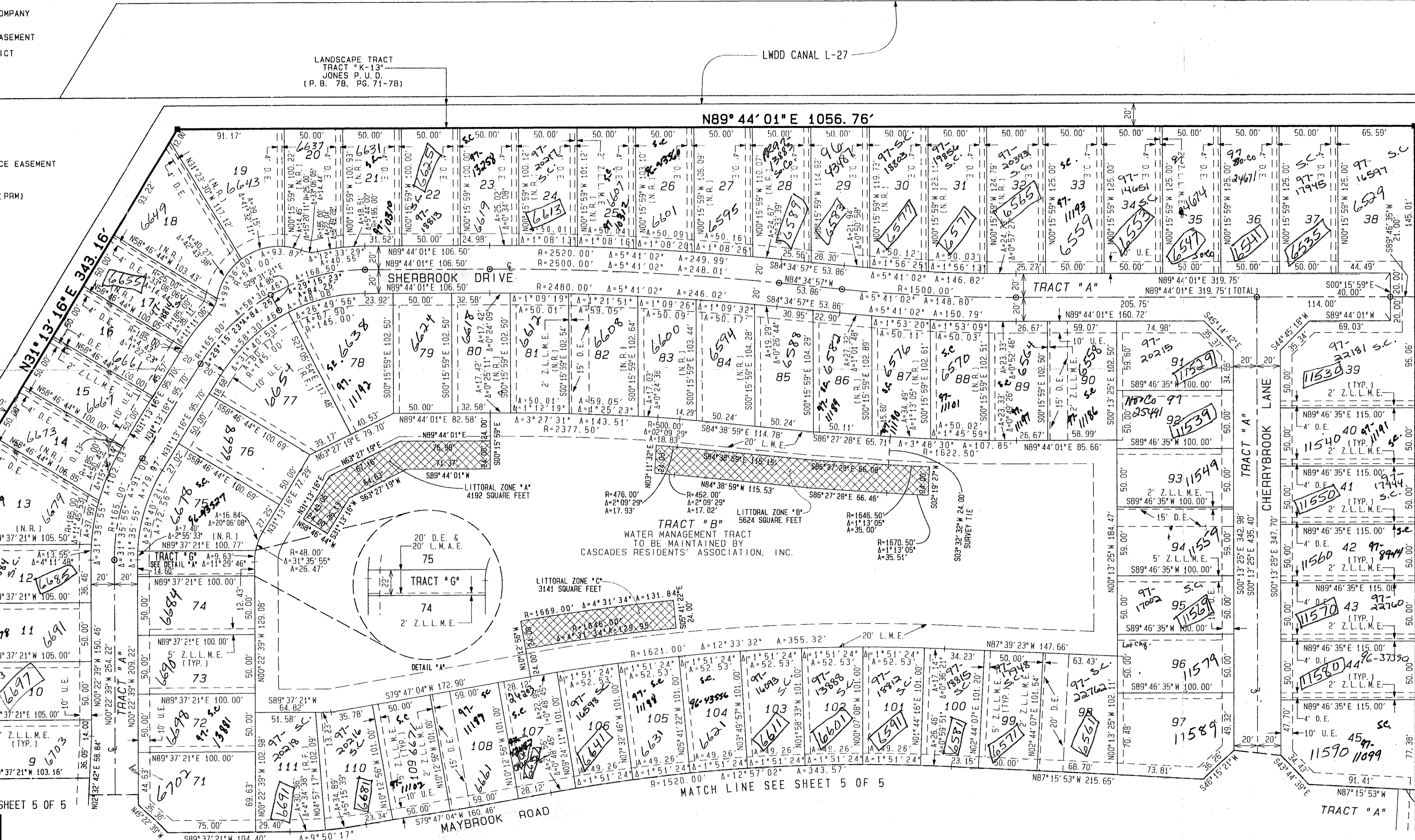
N89°37'21\"/>

TRACT "C-1"
JONES P.U.D.
(PB 78, PG 71-78)

MATCH LINE SHEET 5 OF 5



REVISION * JONES
BOOK 78
FLOOD ZONE B
ROAD # 50
ZIP CODE 33437
DATE 11/19/96
PAGE 168
FLOOD MAP 0004A
ZONING PDD
JD NAME JONES



0683-002
78-168

Pet 95-19
No Schools
Restrictive Covenant Roads {mf 990' PER UNIT
SF 1320' PER UNIT
5/3/96

ATLANTIC - CARIBBEAN MAPPING, INC.
3062 JOG ROAD - GREENACRES, FLORIDA 33467
(561) 964-7884; FAX (561) 964-1969